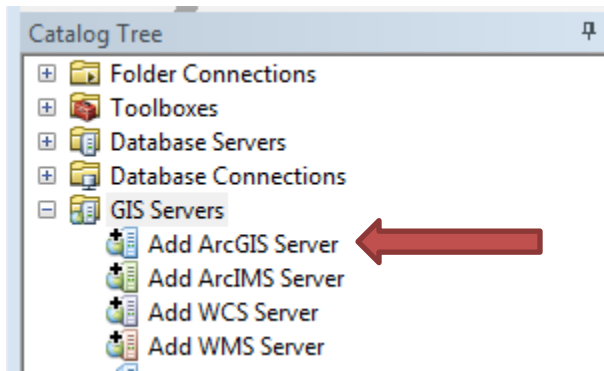


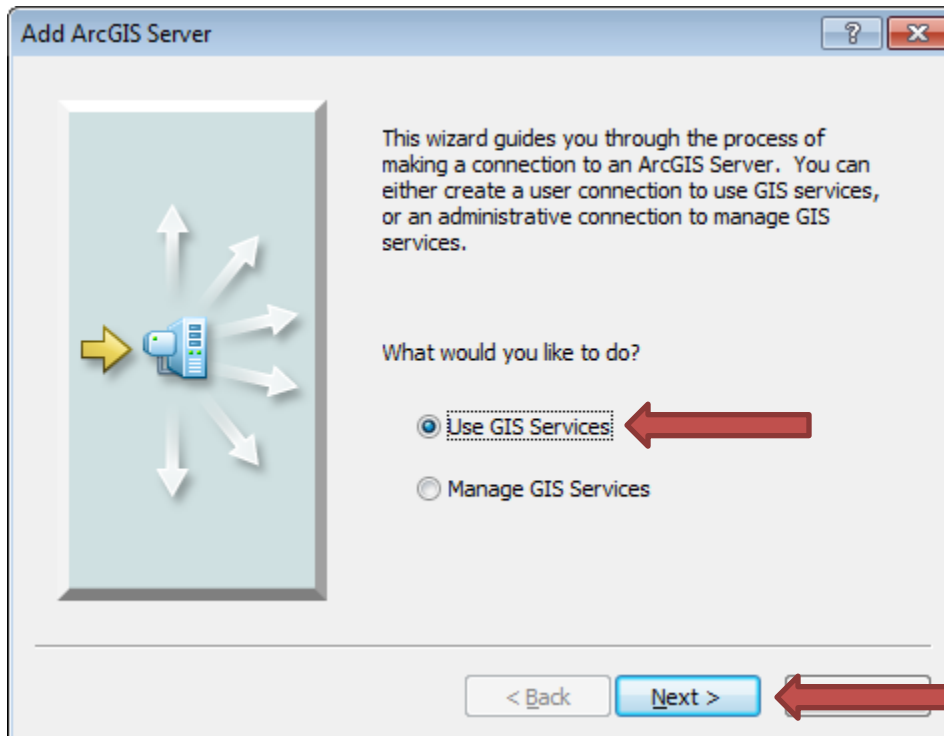
Adding the Statewide Geocoding Web Service to ArcGIS

Updated: 11/29/2017

1. Open ArcCatalog and navigate to 'Add ArcGIS Server' in the Catalog Tree window.



2. Double click on Add ArcGIS Server and make sure the next window has 'Use GIS Services' radio button filled in and click next.



3. Next, you will need to add the link to the web service. The link is <https://gisservices.its.ny.gov/arcgis/rest/services>

General

Choose the type of ArcGIS Server connection

Internet

Server URL:

Local

Host Name:

Authentication (Optional)

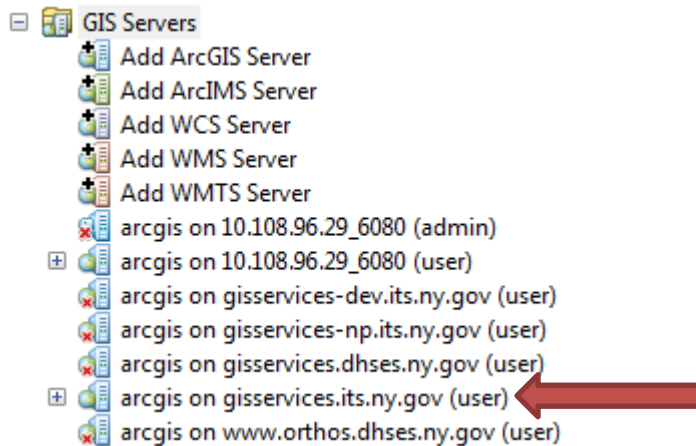
User Name:

Password:

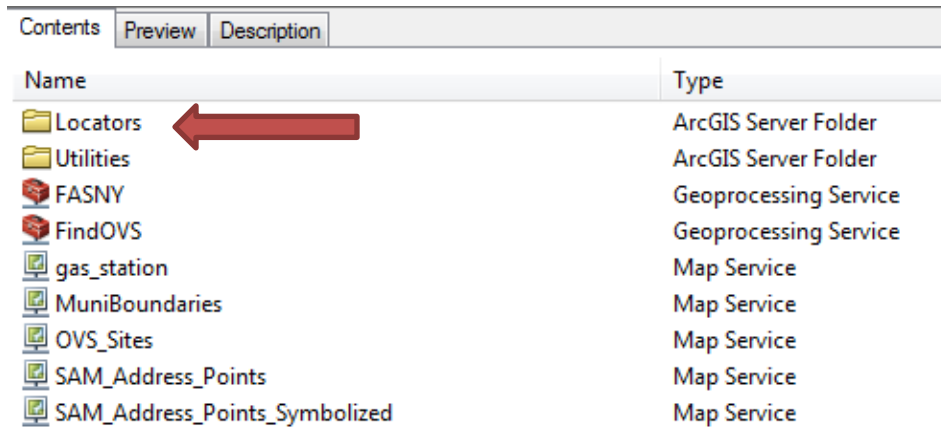
Save Username/Password

< Back Finish

4. In your list under GIS Servers, you will now see a new item named “arcgis on gisservices.its.ny.gov”

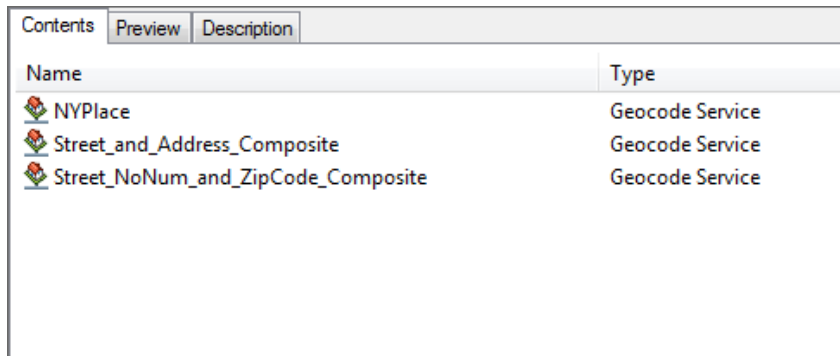


5. When you double click on the new GIS Server, you will see a Locators folder in the Contents Pane of Arc Catalog.



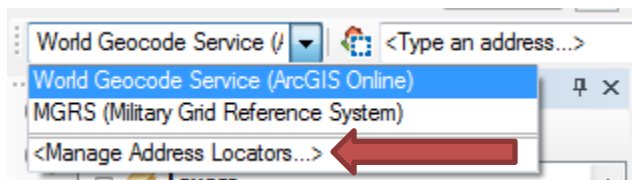
Name	Type
Locators	ArcGIS Server Folder
Utilities	ArcGIS Server Folder
FASNY	Geoprocessing Service
FindOVS	Geoprocessing Service
gas_station	Map Service
MuniBoundaries	Map Service
OVS_Sites	Map Service
SAM_Address_Points	Map Service
SAM_Address_Points_Symbolized	Map Service

6. Double click on this folder to access the 3 Address Locator web services.

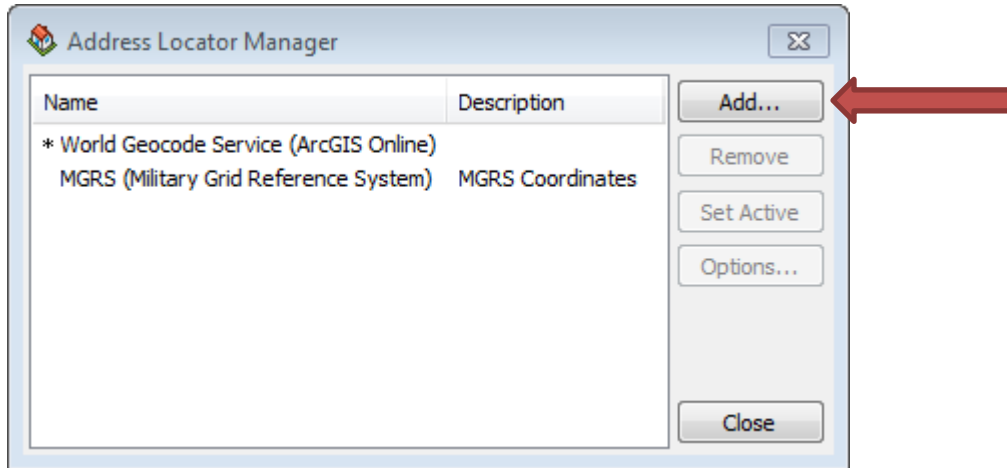


Name	Type
NYPlace	Geocode Service
Street_and_Address_Composite	Geocode Service
Street_NoNum_and_ZipCode_Composite	Geocode Service

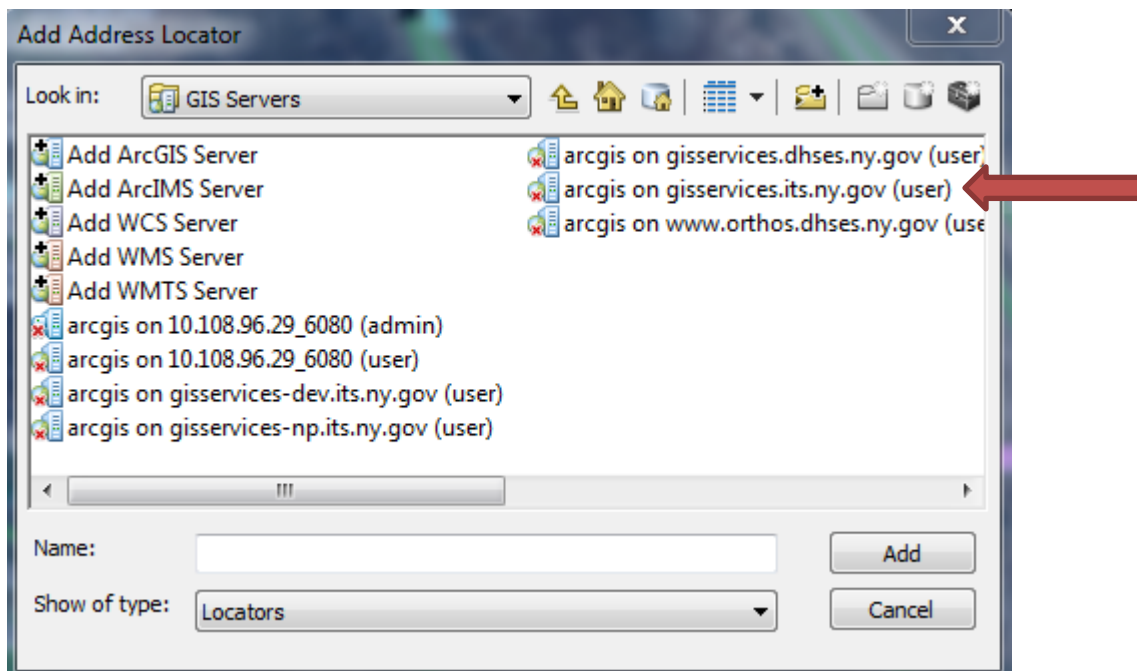
7. The new geocoding service can be added into ArcMap to geocode addresses by using the Geocoding Toolbar and choosing the “Manage Address Locators” option from the drop down menu.



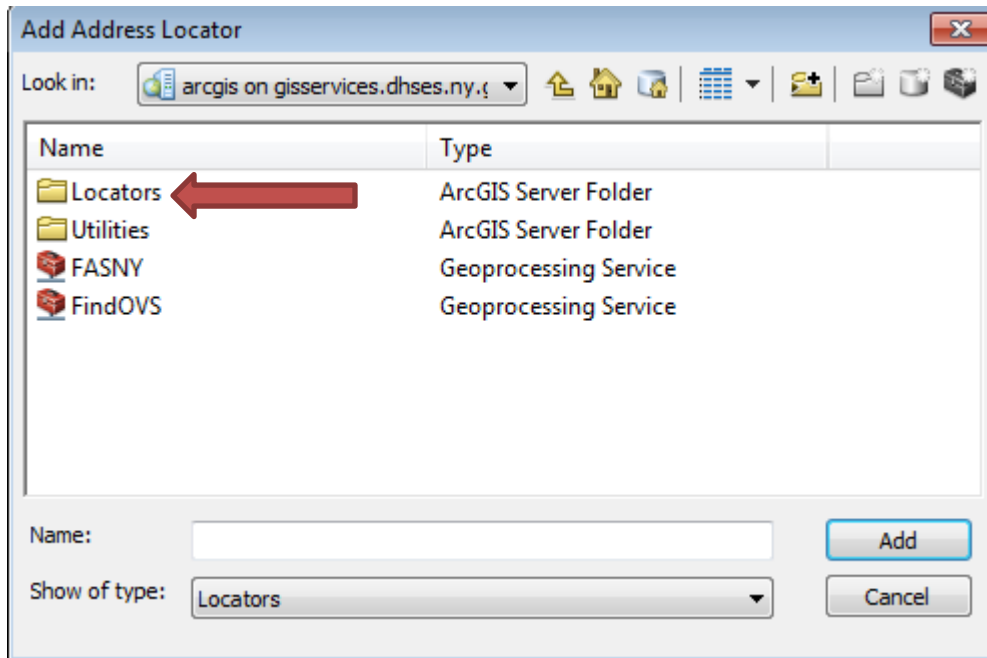
8. In the Address Locator Manager, click Add.



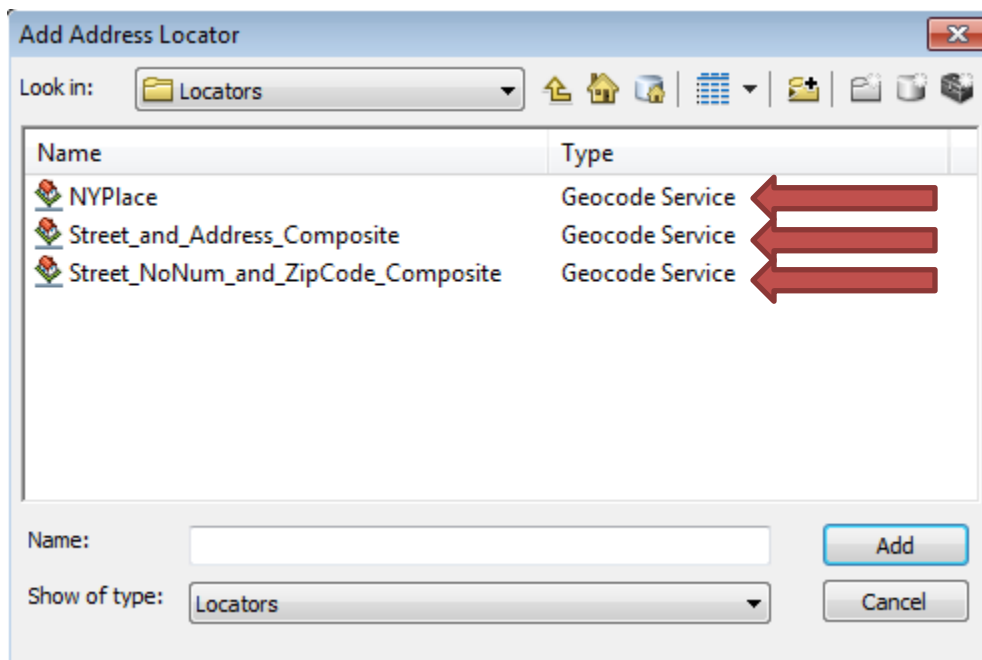
9. Navigate to the GIS Servers where you added the Geocoding Web Service and double click on the "gisservices.its.ny.gov" Service.



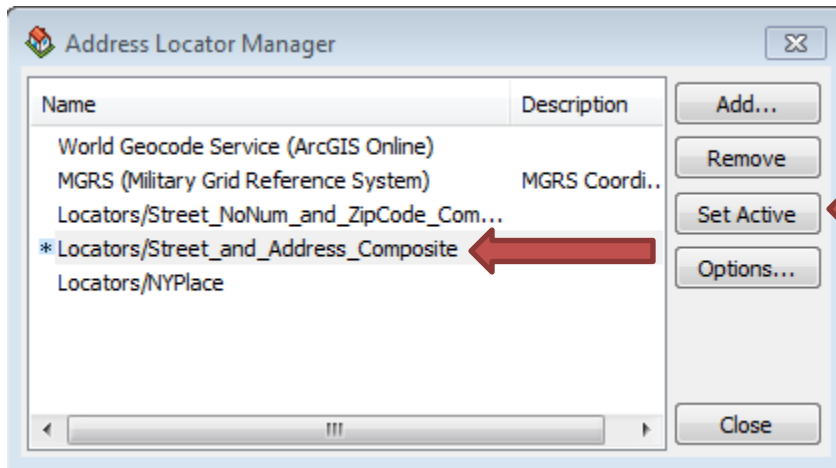
10. Double click on the Locators folder.



11. Select the Address Locator web service you would like to add to ArcGIS. Please refer to the GIS Clearinghouse page for more information regarding the locators (<http://gis.ny.gov/gisdata/inventories/details.cfm?DSID=1278>).



12. When you click add the Address Locator Manager box pops up again and you can see that the new Locator Web Services have been added to the list of geocoders. If you add more than one of the services, make sure you select the one you want to be active and click the 'Set Active' button.



When you go to geocode a set of addresses, you can pick the web service locator from this list like you would for any other locator file that is located on your local drive or network.