

Geospatial Advisory Council

June 22, 2022

Federal Agency Report by Julia O'Brien, FEMA

Status of National Flood Insurance Plan Studies:

The FEMA Region II Risk Mapping site is here:

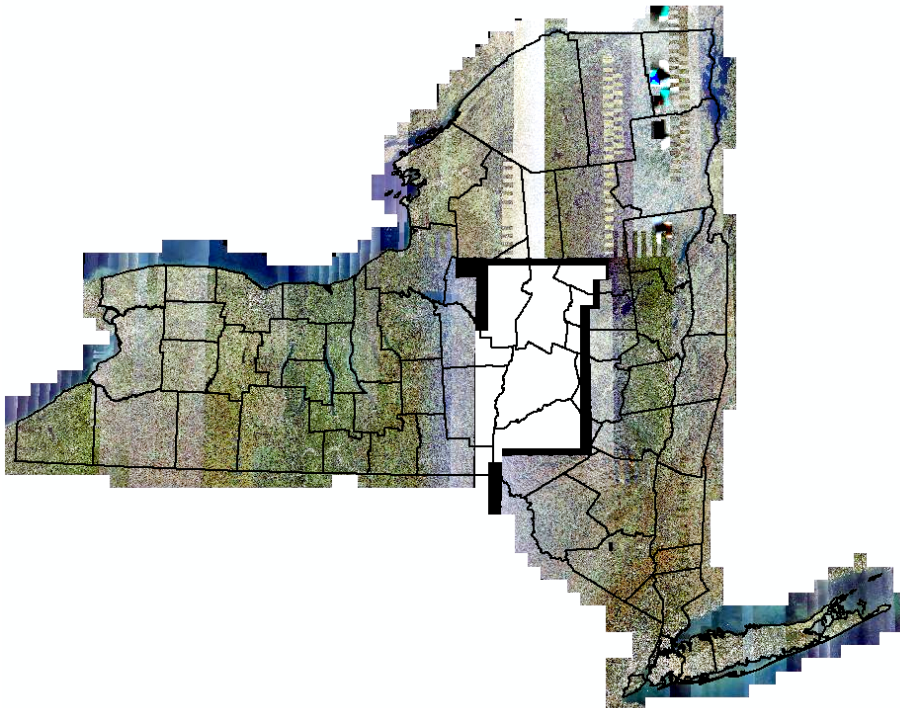
<https://fema.maps.arcgis.com/apps/MapSeries/index.html?appid=39e87438546249d988a85fc3085cab0e>

The Federal Emergency Management Agency (FEMA) Region II office has created this site to support your community through the Risk Mapping, Analysis, and Planning (Risk MAP) program. Risk MAP is a national FEMA program that works with states, tribes, and local communities to evaluate and better understand their current flood risks, as well as the actions that can be taken to mitigate those risks and become more resilient.

This site now also contains the reports that come out of the Discovery projects as they are completed.

US Department of Agriculture

Farm Service Agency – 2021 NAIP has moved from provisional from the contractor to production, which means that it should be almost ready to go. Most of the data was flown in fall of 2021. There was a significant section in the dataset shown below that didn't get collected in the original data collection period. It flown in April. That is part of why it is taking so long to get into production.



NOAA/National Geodetic Survey

Information on the delayed datum release: <https://geodesy.noaa.gov/datums/newdatums/delayed-release.shtml>

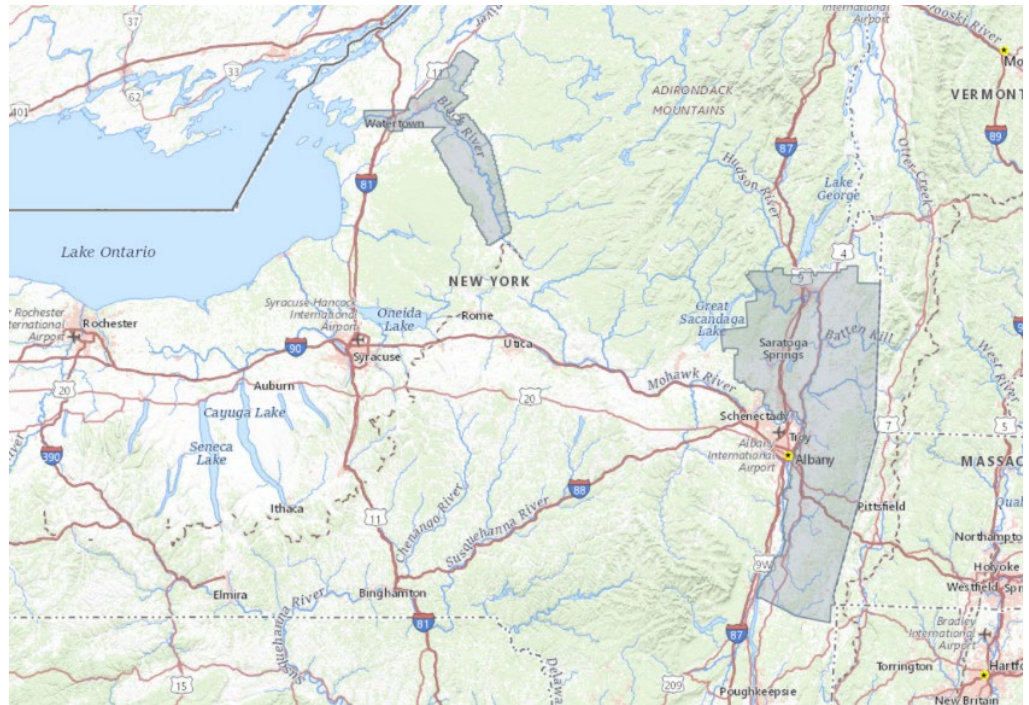
Blueprint Part 3 (Working in the modernized National Spatial Reference System (NSRS) has been released: https://geodesy.noaa.gov/library/pdfs/NOAA_TR_NOS_NGS_0067.pdf

USGS Water Resources Center

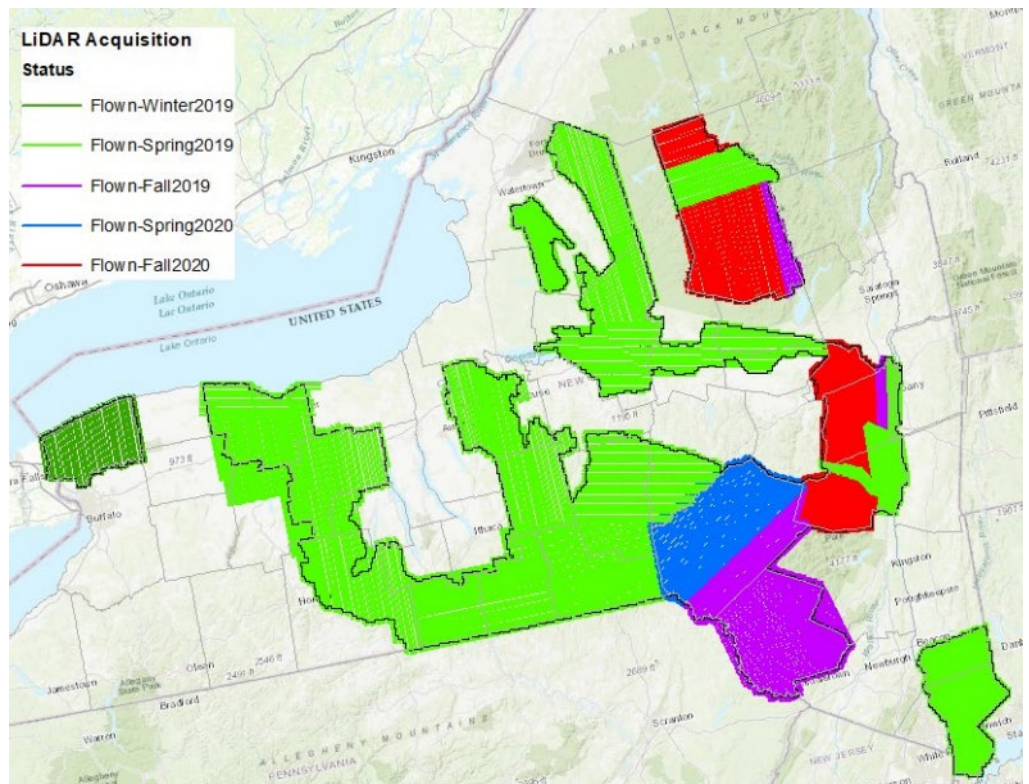
The USGS will be receiving FEMA Individual Assistance data related to flooding of individual structures. This data will be incorporated into their models for defining flood extent (both above and below the surface) from the Ida High Water Mark Collection efforts. As of this date, the funding has not yet been received.

USGS updates for NYS:

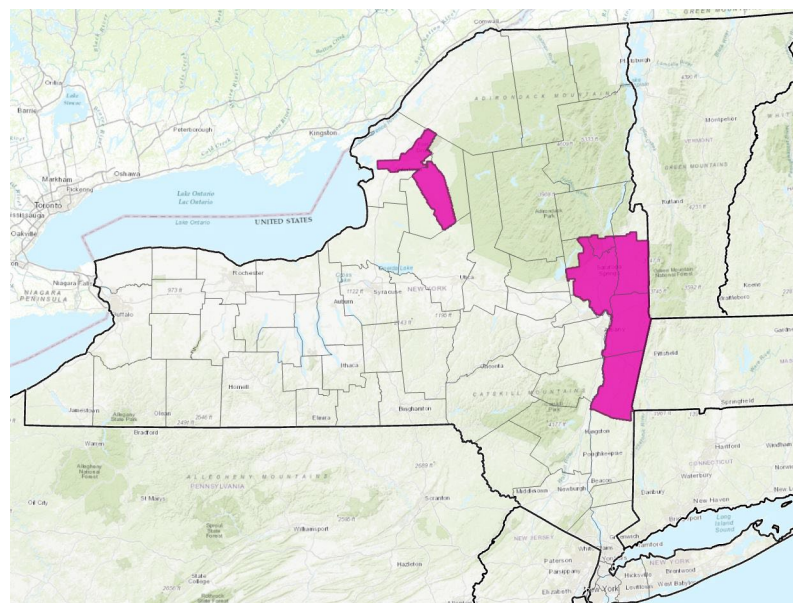
- 3D Elevation Program (3DEP) updates
 - FY22 USGS Broad Agency Announcement (BAA)
 - NYS ITS has been identified as an award recipient for the collection of Quality Level (QL) 2 lidar elevation data for 4 counties (Dutchess, Orange, Rockland, and Ulster counties) in the southeast part of the state covering 3,211 square miles. More information is available here: <https://www.usgs.gov/3d-elevation-program/broad-agency-announcement-baa-fy22-awards#NY%20-%20New%20York%20Southeast%205%20Counties>
 - Two 3DEP projects are still in progress
 - 2020 Harris Roman NY Lidar
 - Consists of Geiger Mode lidar being collected for a utility company with a focus on sensing electrical wires, electrical components, etc. during leaf-on season.



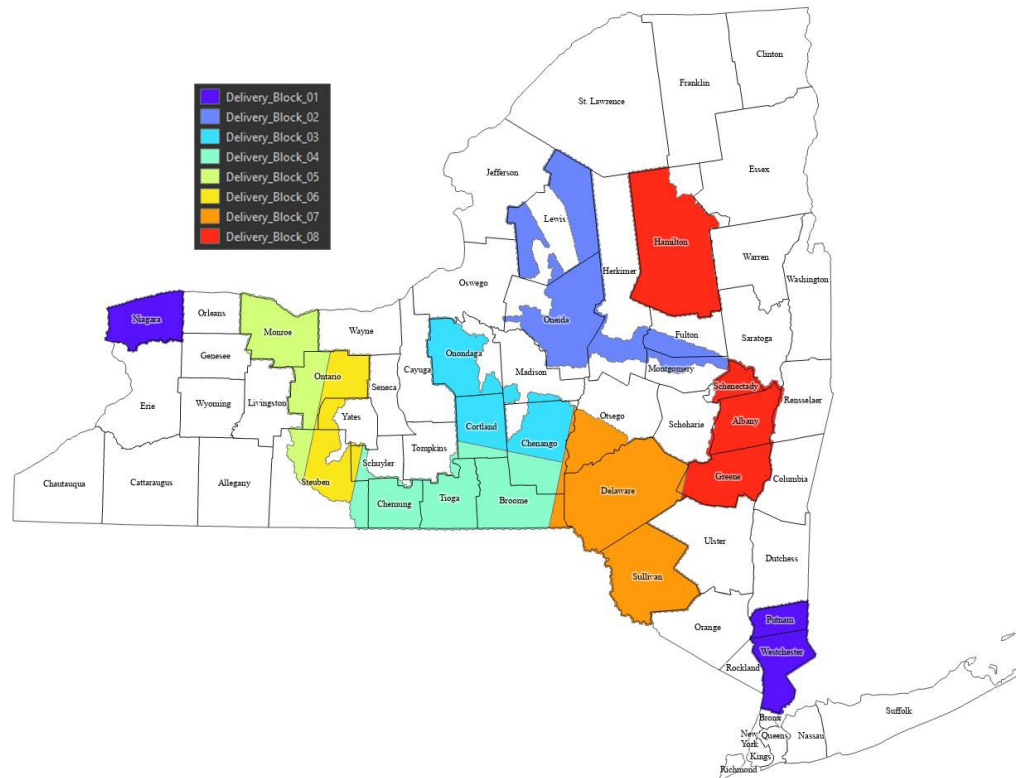
- No new updates. Data validation is ongoing. Period of performance was extended to 4/12/2022.
- 2018 FEMA R2 Central NY Lidar
 - Consists of QL2 lidar elevation data collected between winter 2019 through fall 2020 in central NYS.



- No new updates. Data review, correction, and validation are ongoing. It is likely that the full final dataset may not be shipping out until summer 2022.
- Some of the data are available on the USGS rockyweb server at:
 - Lidar point cloud (LPC) data - https://rockyweb.usgs.gov/vdelivery/Datasets/Staged/Elevation/LPC/Projects/NY_FEMAR2_Central_2018_D19/
 - Original product resolution (OPR) data - https://rockyweb.usgs.gov/vdelivery/Datasets/Staged/Elevation/OPR/Projects/NY_FEMAR2_Central_2018_D19/
- Recent National Geospatial Program (NGP) Technical Announcements
 - topoBuilder - On Demand Custom Topographic Maps
 - The USGS has released topoBuilder, a public web application that enables users to request customized USGS-style topographic maps, known as an OnDemand Topos, that utilize the best available data from The National Map.
 - See the full Technical Announcement here: <https://www.usgs.gov/news/technical-announcement/demand-custom-topographic-maps>
 - HydroAdd – Linking Water Data to the Stream Network Has Never Been Easier
 - The USGS has released HydroAdd, a new web-based Hydrography Addressing Tool that allows users to easily give their water data the equivalent of a street address on the stream network.
 - See the full Technical Announcement here: <https://www.usgs.gov/news/technical-announcement/hydroadd-linking-water-data-stream-network-has-never-been-easier>
- 3D Elevation Program (3DEP) updates
 - In-progress 3DEP projects
 - NY_HudsonRiverRegion_2020_A20
 - Consists of Geiger Mode lidar being collected for a utility company with a focus on sensing electrical wires, electrical components, etc. during leaf-on season.

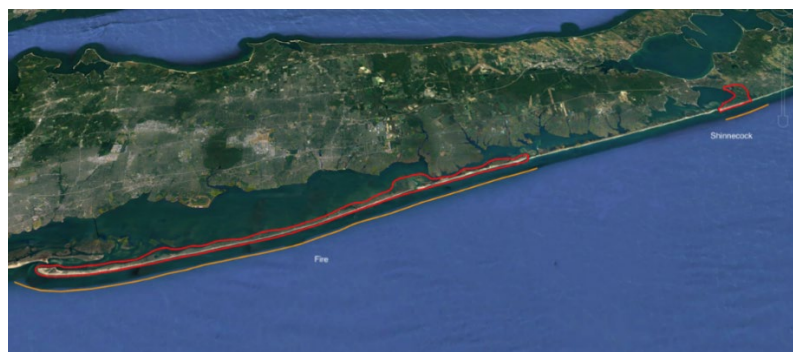


- It is possible that not enough ground points were collected to qualify the data for 3DEP, and it is unclear whether or not the USGS will publish these data.
- NY_FEMAR2_Central_2018_D19
 - Consists of QL2 lidar elevation data collected between winter 2019 through fall 2020 in central NYS.



- Data review, correction, and validation are ongoing. The USGS is waiting on corrections for Delivery Blocks 3 and 5.
- All other Delivery Blocks have provisionally accepted data available on the USGS rockyweb server (see the links in the top two bullets below) presently and should be getting published to The National Map as well.
 - Lidar point cloud (LPC) data - https://rockyweb.usgs.gov/vdelivery/Datasets/Staged/Elevation/LPC/Projects/NY_FEMAR2_Central_2018_D19/
 - Original product resolution (OPR) data - https://rockyweb.usgs.gov/vdelivery/Datasets/Staged/Elevation/OPR/Projects/NY_FEMAR2_Central_2018_D19/
- Drives containing provisionally accepted data were shipped from the contractor and received two weeks ago by FEMA and NYS ITS.
- Once the last Delivery Blocks in review are accepted, a final vertical accuracy assessment will be completed for the entire project, and drives containing final data will be shipped, which will likely not occur until late summer 2022 at the earliest.

- Upcoming 3DEP projects
 - NY_Hudson_D22
 - The USGS Earth MRI program has agreed to recollect the entire NY_HudsonRiverRegion_2020_A20 project area in the fall of 2022.
 - Currently finalizing the task order.
 - NY_2022_Southeast
 - NYS ITS has been identified as an award recipient for the collection of Quality Level (QL) 2 lidar elevation data for 4 counties (Dutchess, Orange, Rockland, and Ulster counties) in the southeast part of the state covering 3,211 square miles. More information is available here: <https://www.usgs.gov/3d-elevation-program/broad-agency-announcement-baa-fy22-awards#NY%20-%20New%20York%20Southeast%205%20Counties>
- 3DEP data now available through Microsoft's Planetary Computer
 - Microsoft recently went live on making USGS 3DEP data available in its Planetary Computer (Microsoft's version of Google Earth Engine):
 - <https://planetarycomputer.microsoft.com/dataset/group/3dep-lidar>
 - In addition to the seamless DEMs they have been providing, they have also processed several new layers to create the following second-order products from the data:
 - DSMs
 - Point Source ID
 - Intensity
 - Height Above Ground
 - Return Number
 - Classification
- Topobathymetric survey updates
 - NFWF FY22 NJ/NY collect
 - Topobathymetric surveys are being collected in NJ/NY this summer by USGS St. Petersburg Coastal and Marine Science Center as part of a FY22 National Fish and Wildlife Foundation (NFWF) project (these data were also collected in 2018 and 2020) in cooperation with USACE JALBTCX (Joint Airborne Lidar Bathymetry Technical Center of Expertise).
 - Currently trying to finalize extent of data collection based on budget.
 - NY collection extent is planned to include Fire Island and Shinnecock Reservation, NY – not collecting Shinnecock Bay



- Recent National Geospatial Program (NGP) Technical Announcements
 - None to report