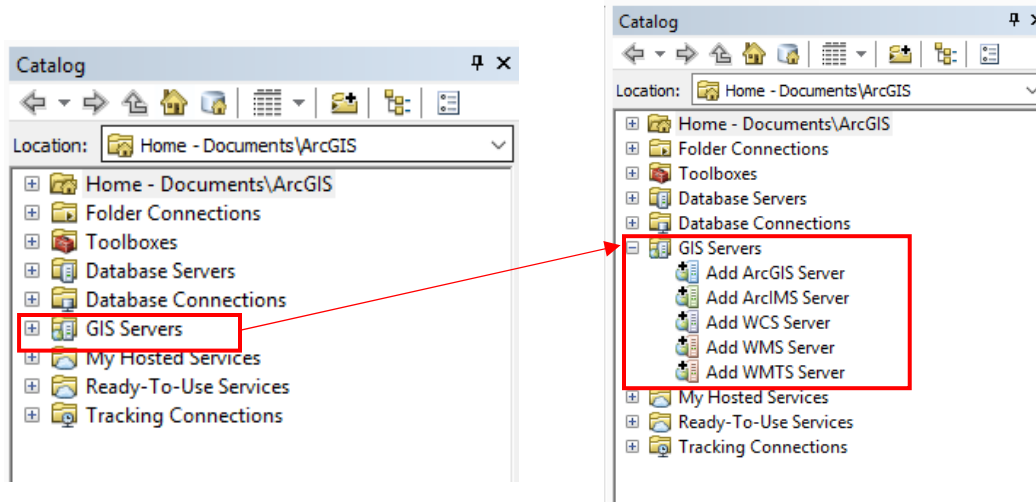


## Viewing the SAM Address Points in ArcMap

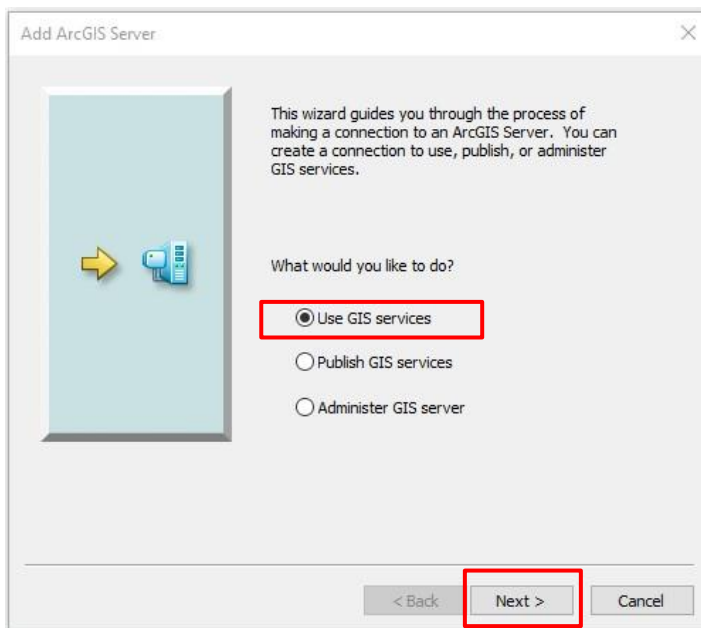
Updated: 12/1/2022

### Adding the SAM Address Points webservices to ESRI ArcMap:

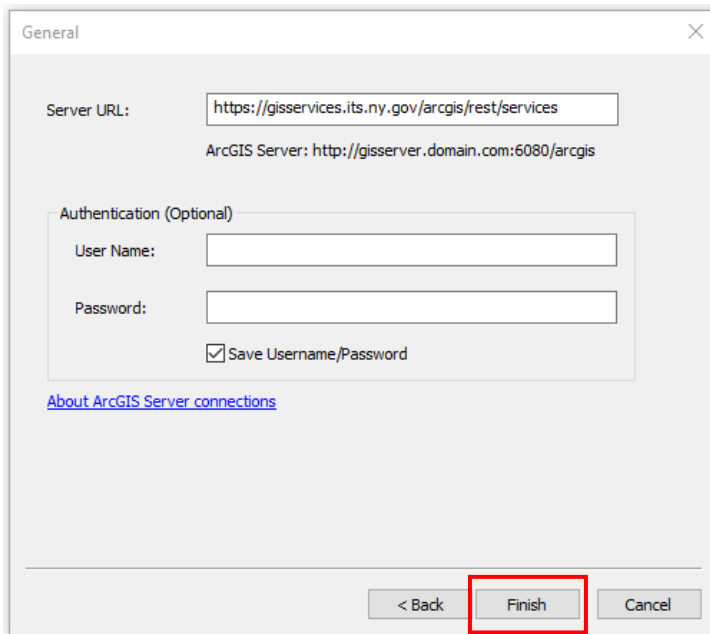
1. Start ArcMap or ArcCatalog.
2. In the Catalog tree, expand the GIS Servers node.



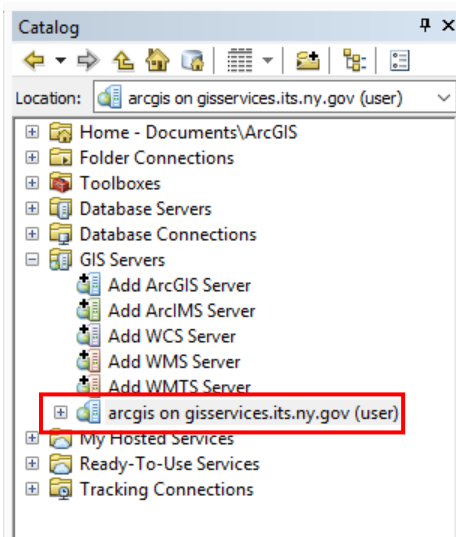
3. Double-click Add ArcGIS Server.
4. Choose Use GIS services and click Next.



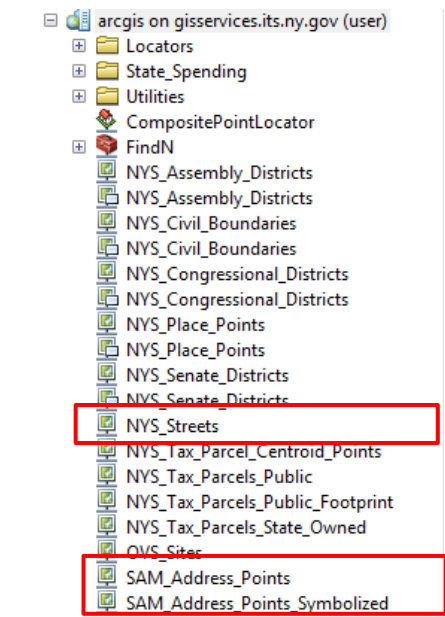
5. For Server URL, type the below URL:  
<https://gisservices.its.ny.gov/arcgis/rest/services>
6. Then Click Finish



7. Your connection appears in the GIS Servers node in the Catalog tree.



8. Expand your connection and navigate to the NYS Streets, SAM Address Points and SAM Address Points Symbolized.



9. To add the Layer to the Map, click on the layer and drag the layer to the Table of Contents.

