

# Connecting to ShareGIS Web Services with ArcPro

## Introduction

Many government agencies, not for profits, and other organizations make cartographic data layers available through web services. Web services represent remote data or GIS layers that the user isn't required to download or maintain on their machine. They are resources that take the burdens of data creation, maintenance, and updates off the user, but which can easily be connected to GIS software or applications. In the case of the NYS GIS Program Office (GPO), web services represent framework data for users to combine with their business data to enhance data analysis.

The catalog of hosted services can be accessed through the GPO's instance of ArcGIS HUB or via ESRI REST endpoints. Both options provide access to data like Building Footprints, Legislative Boundaries, Tax Parcel Boundaries, Streets, and Orthoimagery, as well as data from partnering NYS agencies. Additionally, both web service resources include access to the GPO's geocoding service which provides the most accurate address geocoder for the State. These services are **always available, free of charge to all users, and are frequently updated** to ensure the best data is available for all of New York State.

*NOTE:* This document outlines the steps for accessing webservices in ArcPro version 2.9.5 and later.




## Generating a Map

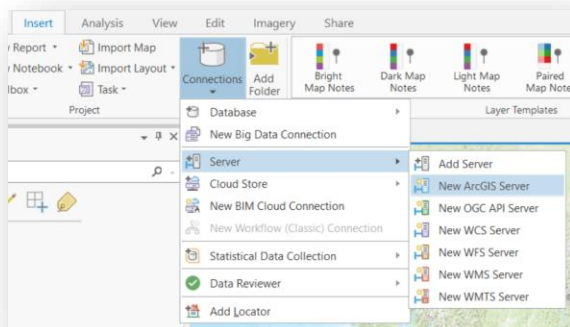
ESRI provides tutorials for creating a map in ArcPro and setting up all of your map components. To access an introductory tutorial use this [link](#) to begin understanding how ArcPro and ArcCatalog can be used for mapping. Once you have this understanding, the addition of web services becomes an easy step through process.

## Adding ShareGIS Web Services to ArcPro

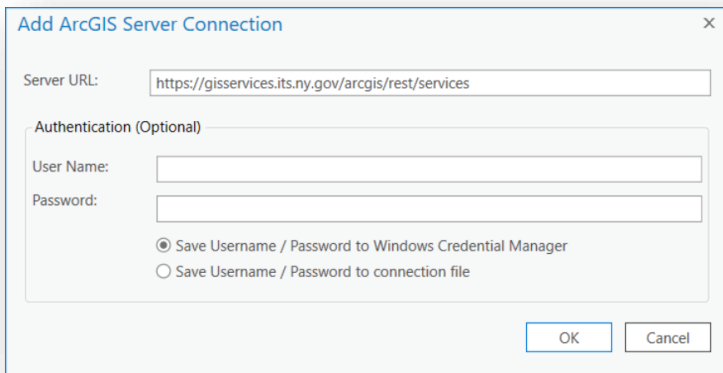
ArcPro comes with a built-in connector to Arc Catalog. The connection can be opened through the Catalog Pane icon found in the software's main toolbar under the **View** tab.

To connect to a web service you can either:

1. open the Catalog Pane, right-click on the **Servers** dropdown, and select **New ArcGIS Server Connection**; or
2. on the **Insert** tab, in the **Project** group, click **Connections**  > **Server**  > **New ArcGIS Server** .

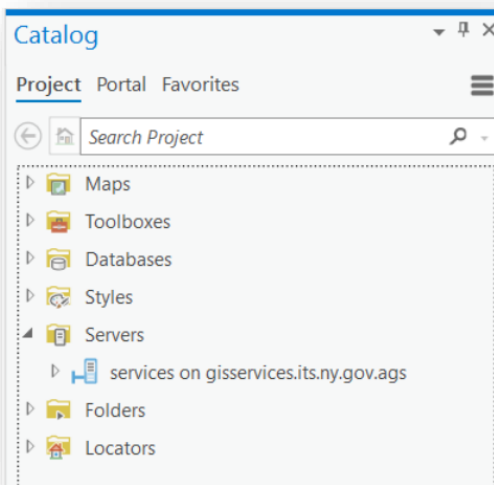


Either of these approaches will open the “Add ArcGIS Server Connection” window. Type the URL of the server site you want to connect to in the **Server URL** text box. To connect to the GPO’s catalog of web services enter the url <https://gisservices.its.ny.gov/arcgis/rest/services>. Neither a User Name or Password are required.

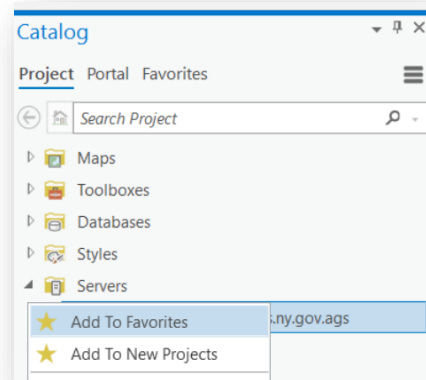


Click **OK**.

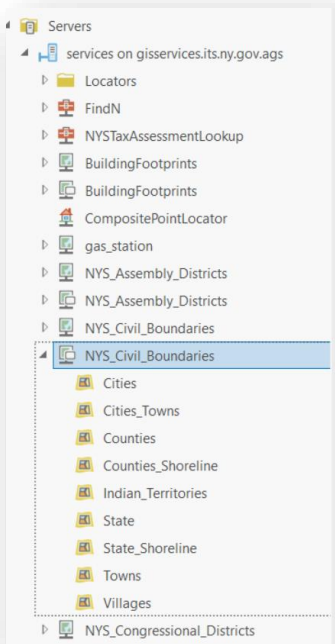
A connection file is created and saved in the project's home folder. An item referencing this connection file is added to the project, and the connection appears in the **Catalog** pane and the catalog view.



You can add the server connection to your favorites by right-clicking on the server connection.



Expanding the dropdown under the arrow for the server connection shows the list of available web services that can be added to the map.



Either drag the web service into the Table of Contents or right-click on the layer and select “Add to Current Map” to add the web service layer to your current desktop session.

