

# Connecting to ShareGIS Web Services in QGIS

Updated August 3, 2023

Connecting to a ShareGIS web service in QGIS is achieved through the software's main toolbar which comes pre-loaded upon installation. In addition, updates to the software (version 2.18 onward) provide a direct ESRI Server connection for web services.

## STEPS

- 1) To start, navigate to “**Layer**” on the top tool bar, hover over “**Add Layer**” from the dropdown menu for options “**Add ArcGIS Map Service Layer**” and “**Add ArcGIS Feature Service Layer**” near the bottom of the second dropdown menu.

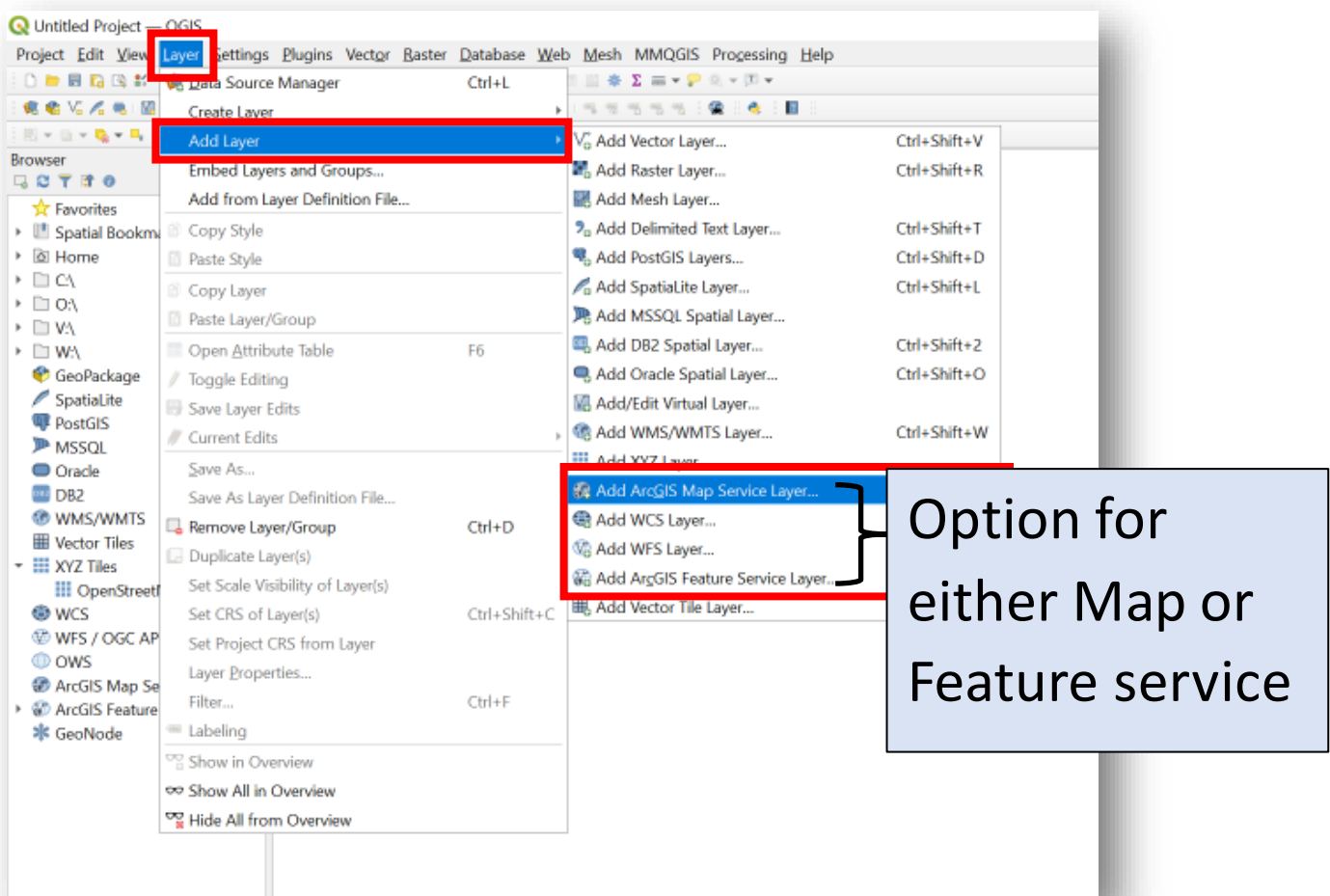
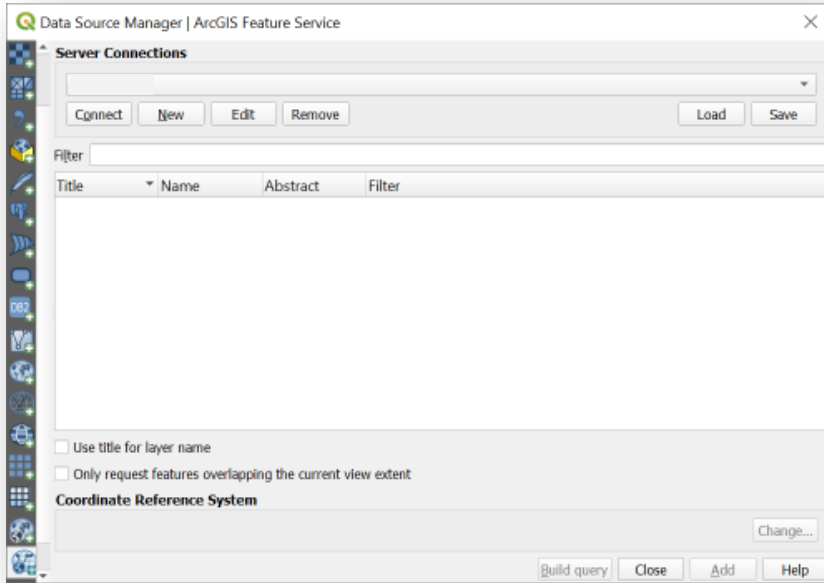
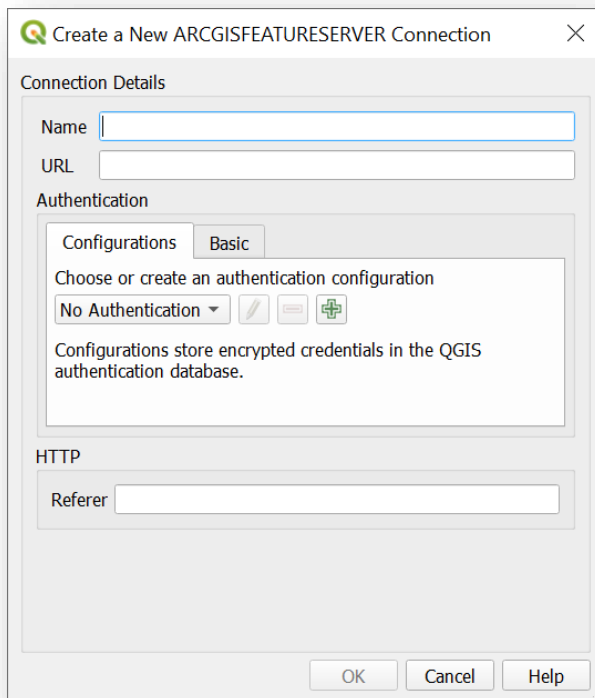


Figure1: Steps for adding an ESRI web service to QGIS following **Layer** -> **Add Layer** -> **Add ArcGIS Map (or Feature) Service Layer**

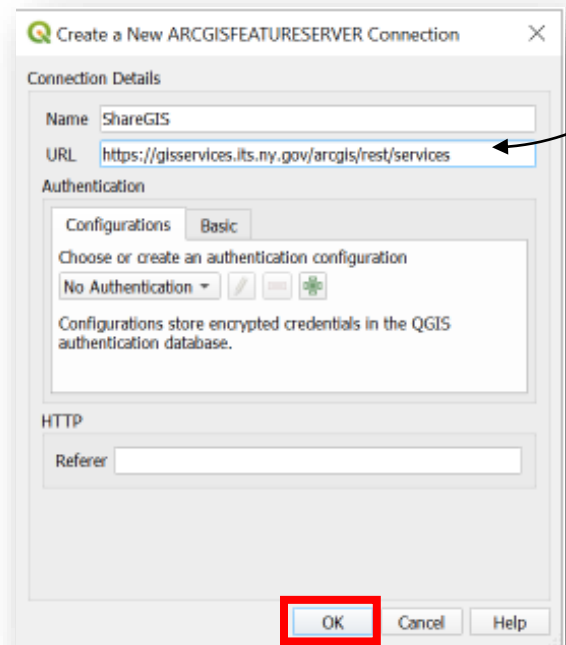
- 2) Once you have selected the web service type, the **Data Source Manager** dialogue box will open on the screen



- 3) Select **“New”** under Server Connections to begin a new service connection...



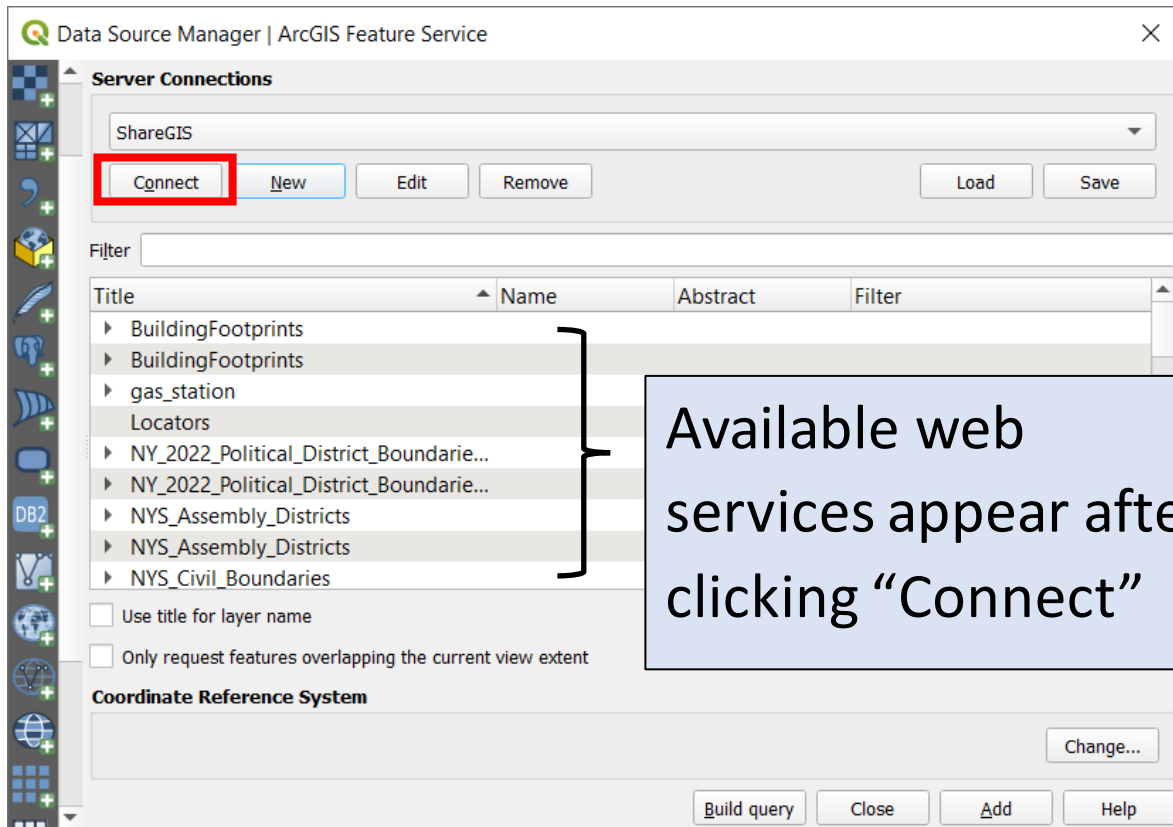
To connect to ShareGIS web services enter <https://gisservices.its.ny.gov/arcgis/rest/services>



Name your connection and past in the ShareGIS web address url in the “URL” box.

Click **“OK”** to go back to the Data Source Manager Window.

- 4) In the Data Source Manager window you will see the name of your new service connection. Click “**Connect**” to populate the connection with the available web services.



- 5) Double click the web service and the layer will be added to the map, and the connection will appear in the Browser or Table of Contents area under “ArcGIS Map Service” or “ArcGIS Feature Service” depending on which type of service you added.

